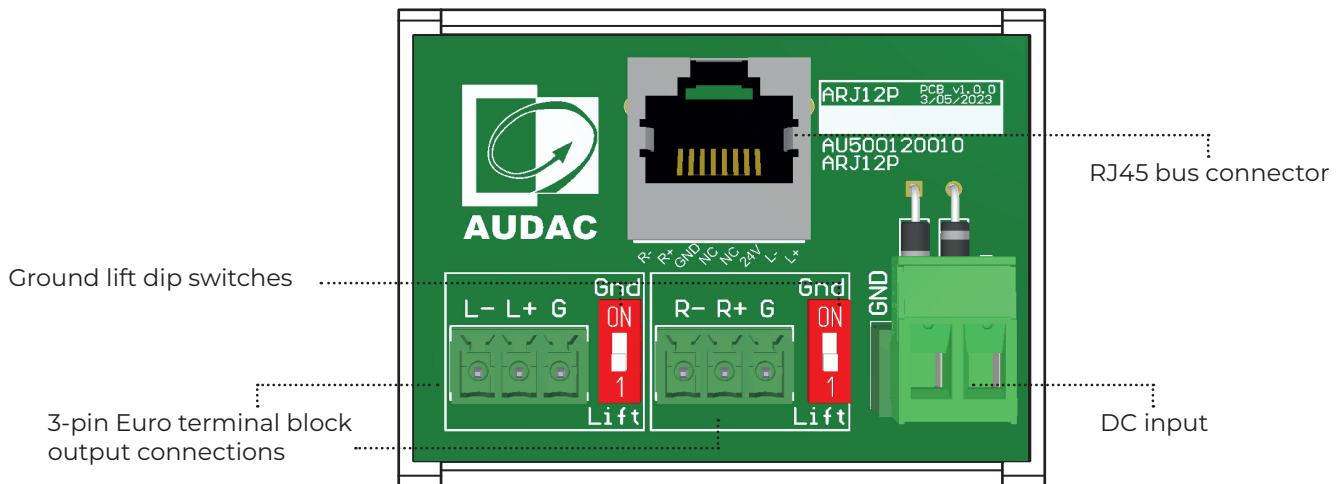


Junction box for connecting peripheral devices to a standard line input

The ARJ12P is a junction box for connecting peripheral devices to a standard line input. It enables signal transfer over long distances over a twisted cable. With its ability to transmit signals over long distances through a twisted cable, the ARJ12P offers reliable and high-quality performance for various applications. The junction box can be used in both ways, either audio signal can be sent thru or received from the RJ45 bus connector.

Because the ARJ12P is a passive junction box, the maximum cable run length is dependent on the following factors: connected input, cable type (shielded or unshielded, CAT rating, etc.), and installation location (next to power cabling, dimmers, etc.). The unbreakable plastic housing allows easy mounting on Mini DIN rails.



Connections

RJ45 bus connector

The RJ45 bus connection is used to carry a balanced stereo audio signal and 24V power to the peripheral.



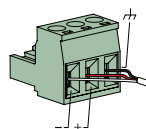
Pin 1	White-Orange	L+
Pin 2	Orange	L-
Pin 3	White-Green	+24V DC
Pin 4	Blue	Not used
Pin 5	White-Blue	Not used
Pin 6	Green	GND
Pin 7	White-Brown	R+
Pin 8	Brown	R-

DC input

The DC input is used to supply the peripheral input with the required voltage via an external power supply connection. Please check the specifications of the connected unit for power requirements and pay attention to the polarity markings.

3-pin Euro terminal block output connections

3-pin Euro block connectors are used for the connection of stereo audio signals to a balanced input (e.g. connected pre-amplifier). Please check the input section of the connected device whether it is capable of handling the output level of the connected peripheral (e.g. +12 dBV).



Left: Signal -
Right: Signal +
Center: Ground

Ground lift dip switches

Ground lift dip switches provide the option to eliminate unwanted hum and buzz by interrupting the ground, this prevents current from flowing through the cable shielding resulting in a clean audio signal.

Precautions



READ FOLLOWING INSTRUCTIONS FOR YOUR OWN SAFETY

ALWAYS KEEP THESE INSTRUCTIONS. NEVER THROW THEM AWAY

ALWAYS HANDLE THIS UNIT WITH CARE

HEED ALL WARNINGS

FOLLOW ALL INSTRUCTIONS

NEVER EXPOSE THIS EQUIPMENT TO RAIN, MOISTURE, ANY DRIPPING OR SPLASHING LIQUID. AND NEVER PLACE AN OBJECT FILLED WITH LIQUID ON TOP OF THIS DEVICE

NO NAKED FLAME SOURCES, SUCH AS LIGHTED CANDLES, SHOULD BE PLACED ON OR NEAR THE APPARATUS

DO NOT STICK ANY OBJECTS THROUGH THE VENTILATION OPENINGS.

DO NOT INSTALL THIS UNIT NEAR ANY HEAT SOURCES SUCH AS RADIATORS OR OTHER APPARATUS THAT PRODUCE HEAT

DO NOT PLACE THIS UNIT IN ENVIRONMENTS WHICH CONTAIN HIGH LEVELS OF DUST, HEAT, MOISTURE OR VIBRATION

THIS UNIT IS DEVELOPED FOR INDOOR USE ONLY. DO NOT USE IT OUTDOORS

ONLY USE ATTACHMENTS & ACCESSORIES SPECIFIED BY THE MANUFACTURER

USE THE APPARATUS ONLY IN MODERATE CLIMATES



CAUTION - SERVICING

This product contains no user serviceable parts. Refer all servicing to qualified service personnel. Do not perform any servicing (unless you are qualified to)



EC DECLARATION OF CONFORMITY

This product conforms to all the essential requirements and further relevant specifications described in following directives: 2014/30/EU (EMC) & 2014/35/EU (LVD).



WASTE ELECTRICAL AND ELECTRONIC EQUIPMENT (WEEE)

The WEEE marking indicates that this product should not be disposed with regular household waste at the end of its life cycle. This regulation is created to prevent any possible harm to the environment or human health.

This product is developed and manufactured with high quality materials and components which can be recycled and/or reused. Please dispose this product at your local collection point or recycling centre for electrical and electronic waste. This will make sure that it will be recycled in an environmentally friendly manner, and will help to protect the environment in which we all live.

Technical specifications

Connectors	Balanced audio input & power output	1 x RJ45
	Audio output	2 x 3-pin Euro terminal block (3.81 mm pitch)
	Power input	1 x 2-pin Euro terminal block (5.08 mm pitch)
Ground lift		2 x 1-way DIP switch
Dimensions	(W x D x H)	61 x 48 x 40 mm
Weight		0.043 kg
Mounting		Mini DIN rail
Construction		Unbreakable plastic housing